



## Modular Cooking Range Line 900XP Worktop with Water Column and Liter Counter, 200 mm

ITEM # \_\_\_\_\_

MODEL # \_\_\_\_\_

NAME # \_\_\_\_\_

SIS # \_\_\_\_\_

AIA # \_\_\_\_\_



206378 (WTNWTCT9E)

Ambient worktop with water column and liter counter, 1/4 module - 900XP

### Short Form Specification

Item No. \_\_\_\_\_

200 mm wide top unit with mounted water column, fitted with electronic liter-counter. Easy operation, LED display allows to constantly monitor the water output. Unit to be installed on bases, bridging supports or cantilever systems. Equipped with liter-counter. One piece pressed worktop in 2 mm thick stainless steel provides a heavy duty work surface under any load.

### Main Features

- 200 mm wide top unit with mounted water column, fitted with electronic liter-counter.
- Easy operation, LED display allows to constantly monitor the water output.
- Unit features cold water tap.
- Unit to be mounted on open base cupboards, bridging supports or cantilever systems.
- Can be installed on neutral base, refrigerated base, cantilever and bridge installation.
- Top configuration allows installation on ambient base only (not possible to install on refrigerated nor freezer base).

### Construction

- Model has right-angled side edges to allow flush fitting joints between units, eliminating gaps and possible dirt traps.
- All exterior panels in Stainless Steel with Scotch Brite finishing.
- Stainless steel top provides a heavy duty work surface under any load.

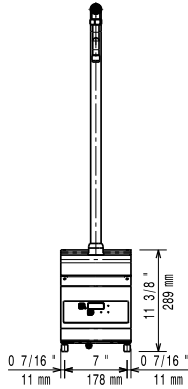
APPROVAL: \_\_\_\_\_



**Optional Accessories**

- |  |            |                          |
|--|------------|--------------------------|
| • Junction sealing kit   | PNC 206086 | <input type="checkbox"/> |
| • Support for bridge type installation, 800mm                        | PNC 206137 | <input type="checkbox"/> |
| • Support for bridge type installation, 1000mm                       | PNC 206138 | <input type="checkbox"/> |
| • Support for bridge type installation, 1200mm                       | PNC 206139 | <input type="checkbox"/> |
| • Support for bridge type installation, 1400mm                       | PNC 206140 | <input type="checkbox"/> |
| • Support for bridge type installation, 1600mm                       | PNC 206141 | <input type="checkbox"/> |
| • Support for bridge type installation, 400mm                        | PNC 206154 | <input type="checkbox"/> |
| • Water column with swivel arm (water column extension not included) | PNC 206289 | <input type="checkbox"/> |
| • Water column extension for 900 line                                | PNC 206290 | <input type="checkbox"/> |
| • Chimney upstand, 200mm   | PNC 206302 | <input type="checkbox"/> |
| • Side handrail-right/left hand (900XP)                              | PNC 216044 | <input type="checkbox"/> |
| • Frontal handrail, 400mm  | PNC 216046 | <input type="checkbox"/> |
| • Frontal handrail, 800mm  | PNC 216047 | <input type="checkbox"/> |
| • Frontal handrail, 1200mm   | PNC 216049 | <input type="checkbox"/> |
| • Frontal handrail, 1600mm   | PNC 216050 | <input type="checkbox"/> |
| • Large handrail - portioning shelf, 400mm                           | PNC 216185 | <input type="checkbox"/> |
| • Large handrail - portioning shelf, 800mm                           | PNC 216186 | <input type="checkbox"/> |
| • 2 side covering panels for top appliances                          | PNC 216278 | <input type="checkbox"/> |

Front


**Electric**

Supply voltage:

206378 (WTNWTCT9E) 230 V/1 ph/50/60 Hz

**Key Information:**

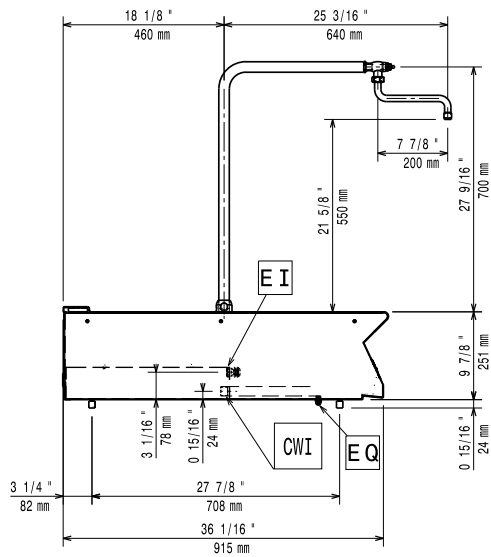
External dimensions, Width: 200 mm

External dimensions, Depth: 930 mm

External dimensions, Height: 250 mm

Net weight: 13 kg

Side


 CWI1 = Cold Water inlet 1  
 EI = Electrical inlet (power)

Top

